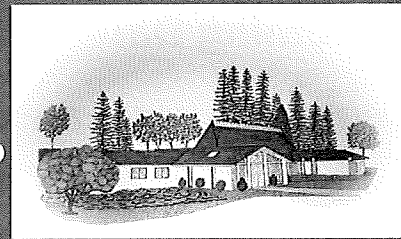


Saint Timothy Lutheran Church

Newsletter



Saint Timothy Lutheran Church,
16431 52nd Avenue W. - Edmonds, Washington 98026
www.sainttimothylutheran.net
stlc_office@frontier.com * (425) 743-2323

February 2021

Printed 1/27/21

Pastor's Thoughts on the Passing Times

Ministry of Listening

"The speaking of God's Word is beset with infinite perils. If it is not accompanied by worthy listening, how can it really be the right word for the other person? If it is contradicted by one's own lack of active helpfulness, how can it be a convincing and sincere word? If it issues, not from a spirit of bearing and forbearing, but from impatience and the desire to force its acceptance, how can it be the liberating and healing word?"-Dietrich Bonhoeffer, Life Together

Brothers and Sisters in Christ,

I struggle to truly listen. Probably not something you want to hear from your pastor. Yet, on occasion, I confess that I get lost in my own thoughts and end up passively listening to someone. Good listeners, in my opinion, are the saints' Saint. Good listeners really hear, want to understand, asks questions for clarification, and are genuinely interested. These people have my utmost respect and praise.

Mental health experts are a booming industry, and to me, that says the world is aware that people can be helped merely by having someone who will listen to them seriously. Christians can forget that the ministry of listening has been committed to them by him who himself is the great listener and whose work they share. Our identity as Christians begins by listening to the Word of God delivered to us. We hear of God working in the world and the stories of Jesus Christ. We have heard and continue to hear the words of promise and forgiveness spoken to us by our parents, mentors, friends, Sunday School teachers, and Pastors. The Word is even spoken back to us from our kids. We ask questions, seek clarification, and are genuinely interested in what God has to say to us. When we listen, we are incorporated and formed into a member of the body of Christ. True listening is to be drawn out of our reality into the reality God speaks. When we listen, we receive God's gifts and are invited to orient our focus outwardly on Jesus Christ. We are pulled from making everything about me, to focusing on someone outside ourselves.

In Christ, we are capable of truly listening to others. The people close to us need to be listened to, to be heard and they need someone who is genuinely interested. When we can listen and understand the hurts, the sufferings, the joys and desires from the other person, we begin to understand their reality. Only then can we address and speak words to their situation and not use sentimental clichés or superficial platitudes.

If we want to be the people of God who speaks the truth in love, then we ought to truly listen and carry one another's burdens. If we think telling someone, "everything is going to be alright," then we have not listened. Listening can be of a greater service than speaking. For when we listen, we are bearing someone else's burdens. When we share our burdens, then the other person is really a brother or sister, and not merely an object to be manipulated. We must suffer and endure each other. The Bible characterizes this by describing the whole life of the Christian as taking up the Cross. In the fellowship of the Cross, we experience the burden of the other.

We listen and speak to one another based on the help we both need. We admonish one another to go the way that Christ bids us to go. We are gentle and we are severe with one another, for we know both God's kindness and God's severity. He has put his Word in our mouths. He wants it to be spoken through us. Why should we think that a person would not understand us when we have truly listened to them? The humble listener will stick to truth and to love. If you continue to listen to Jesus Christ, he will lead you to the people who matter in your life and need an ear to pull.

In Christ's Love,

Pastor Berry

Upcoming Dates and Services - FEBRUARY

2/6/2021 - 8:30 AM: Men's Group

2/7/2021 - 9:00 AM: Bible Class
10:00 AM: Worship Service – 5th Sunday after the Epiphany

2/14/2021 - 9:00 AM: Bible Class
10:00 AM: Worship Service – Transfiguration Sunday

2/17/2021 - 7:00 PM: Ash Wednesday Service

2/20/2021 – 8:30 AM: Men's Group

2/21/2021 - 9:00 AM: Bible Class
10:00 AM: Worship Service – 1st Sunday in Lent

2/28/2021 - 9:00 AM: Bible Class
10:00 AM: Worship Service – 2nd Sunday in Lent

Fellowship News

2020 Santa Stocking Program

The Santa Stocking program was a huge success this year, donating a total of \$1011 to different initiatives and charities in our community: **Everett Gospel Mission, Clothes for Kids, Lutherwood, Lynnwood Food Bank.** Please take time to see the thank you notes sent to St. Timothy at the end of the newsletter. Many thanks to Grace Hundtoft for keeping this great effort at the front of our minds.

Men's Group

St. Timothy Men's Group meets on the 1st and 3rd Saturdays of each month from 8:30-10:00 AM. We are causal group that share highs and lows, begin and end with a prayer, get to know each other. Sometimes we have a "Show and Tell" if one in our group has a neat hobby or interest they would like to share. This is not a Bible study, but a time for Christian men to hang out together and grow in our faith together. Newcomers are always welcome.

Men's Group will meet **February 6, 20 & March 6, 20.**

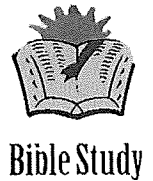
If you have any questions, please give me a call. Gary Eneberg at (206)714-8442, or (425)743-0880.

After Church-Fellowship Walks

In the Fall a number of St. Timothy's folks joined up for walks or mild hikes after worship service in order to have time to visit and fellowship. We abide by social distancing in the open air at local parks and it is enjoyable and healthy. A pair of walking shoes is recommended and umbrella if it seems likely to rain. Every other Sunday, barring terrible weather, there will be walk. In February that would be on the 14th and the 28th. Thank you, Patsy Simon

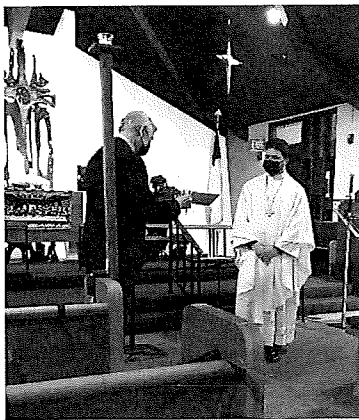
Education at St. Timothy

* **Sunday Morning Bible Class:** On Sunday morning we continue to study the **Gospel of John**. John's Gospel invites us to see Jesus Christ's ministry and work on earth differently from the other three Gospels. We are exploring what John has to say to our situations. In John, Jesus is the Word, I AM, the Light in the darkness revealing his purposes for the creation and for his people. The class is a great way to see how we might live out God's truth based on the account John offers.

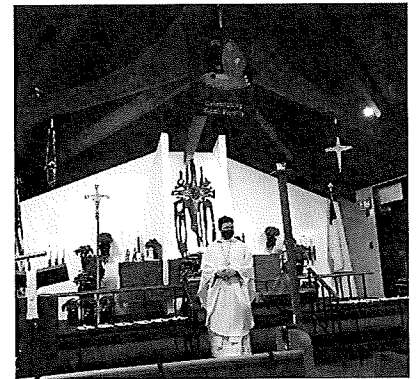


* **Wednesday Morning Bible Class:** In order to avoid unnecessary travel, Wednesday Bible class will remain on hold until further notice.

COVID Advent & Christmas



We had a full Christmas season with Pastor Sean Berry in his first year at St. Timothy Lutheran Church. There were two Advent Wednesday evening services, Christmas Eve Candlelight Service and Christmas morning service. On Christmas morning elder Karl Simon presented Pastor Berry with a card and monetary gift from the congregation. Despite the virus restrictions the church continues with a steady attendance of 20-25 persons and with several new visitors. Sunday Bible Class has resumed January 10 with the study on the Gospel of John and 10 attend with Pastor Berry leading with study guides and power points. *Submitted by Patsy Simon*



March/April 2021 NEWSLETTER

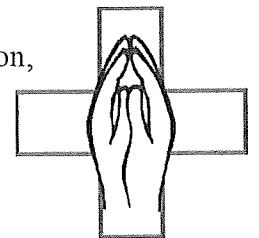
Articles and Calendar information needs to be submitted by **Sunday, February 21st**. Please Email OR hand it to Pastor Berry. Email to:

pastor@stlc-edmonds.com
stlc_office@frontier.com.

Please let us know if we have missed your birthday or anniversary. Thanks! 😊

Saint Timothy Prayer Team

Prayer Team takes prayer requests to provide prayer support for members of the congregation, friends and our community. Together, the team prays through the prayers requested at Saint Timothy. Contact confidentially Patsy Simon or any member of the team if you would like to offer up a petition. No need is too small or answered prayer too little to neglect to mention it to our Heavenly Father.



Patsy Simon, (425)770-3354

"Be joyful in hope, patient in affliction, faithful in prayer." -Romans 12:12

Please Remember in Your Prayers:

Our homebound members:

Barbara Howe; Millie Molenda; Sylvia Robinson; Gertrud Schulz; Mary Stewart; Alex Webster

Folks with Health Concerns:

Major Clay; Wayne Cluver; Sanda Ewalt; Rev. Richard Flath; Joyce Hammond; Sharron Kennedy;
Sylvia Robinson; Thirza Weber; Alex Webster

Family members & friends:

Debbie (Pr. Flath's sister), Bella and Ave (Bill & Carol Hauge's granddaughters),
Esther (Grace Hundtoft's sister), Emily (Mel Suelzle's great-granddaughter)

Birthdays in February:

February

18..... Annaliese Simon
21..... Lenn Gorsuch

Wedding Anniversary in February:

February

28..... Chris and Jeanne Allen 21 years

Baptisms

February

9..... Karen Haase-Herrick
5..... Trenton Nebel
24..... Pam Rudy

Please inform Pastor Berry or the office if any birthdays, baptisms, or wedding anniversaries have been overlooked. Thank you!

**RECORDED SERMONS & SERVICES
ARE ONLINE**

Obviously, COVID changed everyone's routine. We have been doing things to try and make sure the people at St. Timothy continue to be in the rhythm of God's Word to connect, hear, and receive. We now have setup a way for sermons and worship services to be listened online.
visit:

www.santtimothy.lutheran.net

Click the link on the right that says "Pastor Berry's Sermons" and you can listen to just the sermon, or listen to the whole service from Sunday.

Council Report – Mel Suelzle



December 31, 2020 was the last month of our fiscal year since we decided to change our fiscal year to coincide with the calendar year. For this shortened period much change and uncertainty occurred with the transition to a new pastor and the related expenses for this change. Also, Covid 19 has had significant impact in our Income (parking lot revenue along with lower attendance and lower Administration expenses. Favorable items are many of our members are continuing their contributions even if they cannot attend services. This is very much appreciated and helping us meet our financial obligations. Our plans include using our savings each month to balance our income and expenses. For this six months our savings withdrawals are only 60% of what we expected. Our expenses are generally in line with our plans however we expected parking lot revenue to resume by now. However, overall, our results are good and while we are settling in with the new strategy costs, we have used these new expenses and income situations in our new FY2021 plan for January-December and was approved by the congregation on December 13th.

Financial Report for FY2021 July – December

Income	Budget	Actual		Remaining \$\$
Worship Service Offerings	31,759	43,366	136%	11,607
Other	4,053	3,262	80%	791
Savings Withdrawal	18,300	11,059	60%	7,241
Facility Use Income	10,475	325	3%	10,150
Total Income	64,587	58,011	90%	6,576

Expense	Budget	Actual		Remaining \$\$
Elders	50,484	43,598	86%	6,886
Trustees	8,768	8,276	94%	492
Council	4,840	4,555	94%	285
Administration	6,185	3,975	64%	2,209
Worship & Music	3,949	3,714	94%	235
Education	50	0	0%	100
Fellowship	0	0	64%	0
Social Ministry	0	0	0%	0
Stewardship	140	138	99%	2
Evangelism	400	20	5%	380
Total Expense	74,916	64,276	61%	10,640
Income Less Expense	-10,329	-6,265	61%	4,064

LCMS Convention VOTE On January 31st, we will have a brief Voters meeting following service to conduct an important vote requested by the Synod to permit them to delay the Synodical Convention from 2022 to 2023.

The reason for this delay is to give the Districts more time to hold their conventions that are necessary to prepare for the Synodical Convention. Current COVID restrictions prevent many Districts from holding their conventions in 2021 so this vote will allow them to meet in 2022 when COVID restrictions are expected to diminish. The Synod has asked for all congregation turn in their votes by February 15th.


COVID 19 PLANS

As the state guidelines allow, we are working to allow groups to resume meeting at St Timothy. We have developed plans for AA groups to perform special cleaning and distancing procedure for their meetings. Currently only the Thursday night group is meeting in Room 1 as their numbers allow proper spacing in this room. Other groups are larger and still not meeting at St. Tim's.

During our January Council Meeting we reviewed the need to mask requirements for those when greatly distanced from others. Pastor Berry felt his sermon delivery would benefit if he could remove his mask while in the pulpit. After much discussion, it was decided that the current guideline did not consider distance and specifically stated that all service leaders were required to wear a mask. Providing a clear panel on the pulpit is being considered.

Men's Breakfast meeting are resumed for the 1st and 3rd Saturdays. All men in the congregation are invited. Anyone interested should contact Gary Eneberg (gary.eneberg@gmail.com) if you want to receive reminder emails for these meetings.

In January, Sunday morning bible class has resumed. Wednesday morning classes are still on hold for now.

 On January 19th Lifeline Screening held another event at St. Timothy. While the group sanitizes their work space in the Fellowship Hall, we have an extra cleaning of the hallways, elevator, restrooms and narthex areas. In addition to their usual donation, Life Line pays the cost of this special cleaning. Another event is planned for May 28th.

Giving Link on our web site is now operational - As previously approved, a donation link is now available on our web site. Anyone can have their donations occur directly from their bank accounts to the church's account. The site is managed by a company called Tithely. They charge a fee that typically is about 2-3% for this service. The online procedure allows donations to be made at one-time donations or at regular intervals. Donor can increase their donation to cover the 3% fee resulting in the church received the full donation amount.

LWML MISSION MITES

are collected on the fourth Sunday of every month. Please bring yours on February 28.

Donations will be collected during the church service when you come to the front for communion.



LYNNWOOD FOOD BANK
A FRIEND TO OUR COMMUNITY
5320 176TH ST. SW – LYNNWOOD, WA 98037
WWW.LYNNWOODFOODBANK.ORG – 425-745-1635



23 December 2020

St. Timothy Lutheran Church
16431 52nd Ave. W
Edmonds WA 98026-4833

Dear Parishioners of St. Timothy,

Thank you very much for your generous donation to the Lynnwood Food Bank of \$300.00 we received on 22 December 2020. The Lynnwood Food Bank is a 501(c)(3) charity, EIN 84-1642388, and no goods or services were provided by the Food Bank for this contribution. It is only with the support of organizations like yours and your year long contribution program to help those in need in our community.

We are currently in uncharted territory and both our larger and local communities have found themselves in higher need than has been experienced in many years. With the help of our community, the Lynnwood Food Bank has been working to meet the food needs of many returning customers and many new customers, as well.

During the month of November, the Food Bank served 7,138 individuals in 2,113 households, about 50% more than the same period last year. With so many people out of work right now the need has grown substantially, and it is with your support that we are able to help meet that need.

We are currently using the monetary donations we receive to purchase meat, produce, dairy, eggs, and additional dry goods for distribution. We expect to have more clients than usual for several months, through the end of the stay-at-home order and into the economic recovery.

These households are served only because our community provides countless hours of volunteer work and financial support. We thank you for your kindness and generosity towards our community; you are helping this a better place.

If you have any questions about our program, we would be more than happy to talk with you or give you a tour. Please contact us at 425-745-1635 Monday through Friday from 8am-1pm or 8am-6pm on Wednesdays.

Sincerely,

A handwritten signature in black ink that reads 'Matthew J. Appel'. The signature is written in a cursive style with a large, sweeping flourish at the end.

Matthew J. Appel
Treasurer



December 2020

Dear Friends of Lutherwood,

I want to thank you so much for all your prayers, support, and partnership over the past year. With your faithful support, we have been able to continue our ministry.

This year we had to face some major challenges. COVID-19 safety regulations forced us to cancel our summer camp programs. This was a very difficult decision and weighed heavy on our hearts.

In July, we were able to open our Campground and Lodges to single family households. We were contacted by many families that wanted to find a place for retreat and prayer. Thank you to each person that came out and spent time at Lutherwood.

One family that contacted us was a mom and her 2 sons. They were very disappointed that there would be no summer camp and wanted to come up for just a weekend. Their church provided scholarships the previous year and were making this weekend possible. The boys were excited when they arrived, running around, and remembering the fun they had last summer. I saw them down by the lake reading and doing the bible study their Pastor had sent with them. Shortly before they left, they approached me and asked if they could revisit one more fun memory. They wanted to play a game of Carpet Ball. It did not take me long to get them all set up, and I was rewarded with lots of smiles and laughter. It touched my heart to know that the old carpet ball game served as a memory to link them to Lutherwood and their spiritual growth.

You can help us continue our life-changing work and ensure that our ministry will still be here. Ministries like ours will be needed more than ever as our kids heal from this pandemic. Please consider sending a financial gift to Lutherwood Camp and Retreat Center.

"Whoever sows sparingly will also reap sparingly, and whoever sows generously will also reap generously. Each of you should give what you have decided in your heart to give, not reluctantly or under compulsion, for God loves a cheerful giver." 2 Corinthians 9:6-7

Please send your gift in the envelope provided or visit our website www.camplutherwood.org/donate to complete your donation through PayPal. Eligible Thrivent members can direct all or a portion of their Choice dollars to Lutherwood. All gifts are tax deductible.

God Bless,

Robert K. Gillespie
Executive Director
Lutherwood Camp and Retreat Center



CLOTHES FOR KIDS

..... transforming lives.....

Board of Directors:

Nikki Dickerson
Lisa Flynn
Greg Guenther
Teresa King
Kao Saefern
Sheri Zimmerman
Isabel White

Mission Statement:

Clothes For Kids cultivates confidence and a readiness to learn by providing students and their families the opportunity to choose a personalized wardrobe at no cost.

Tax ID: 91-1345075

www.clothesforkids.org

(425) 741-6500

Fax: (425) 741-6511

16725 52nd Ave West
Lynnwood, WA
98037-5710

December 21, 2020

St. Timothy Lutheran Church
16431 - 52nd Ave West
Edmonds, WA 98026-4833

To Whom It May Concern:

Thank you for your generous gift of **\$150.00** to Clothes For Kids, received on **12/14/2020**.

Due to the COVID-19 pandemic, more students in Snohomish County are in need of our services than ever before. We have already distributed over 2,500 complete school wardrobes this school year, and we are not slowing down! Your gift will allow more local students to feel warm, well-dressed, and ready to learn this year.

Thank you for your generosity, and for helping Clothes For Kids to transform young lives right here in our own community. Please accept our appreciation on behalf of the board, volunteers, staff, and the families we serve.

Clothes For Kids is a registered 501(c)(3) non-profit organization. Therefore, your donation is 100% tax deductible. 100% of the donation will go to funding the Clothes For Kids school wardrobe program. Please use the tax ID number **91-1345075** to claim your tax deduction.

Sincerely,

Lisa K. George, Outreach Coordinator
Clothes For Kids



St. Timothy Lutheran Church
16431 52nd Avenue W.
Edmonds, WA 98026-4718

MEDIA MAIL



St. Timothy Lutheran Church

(The Lutheran Church Missouri Synod)

*Serving Lynnwood, Edmonds, and
Southwest Snohomish County*

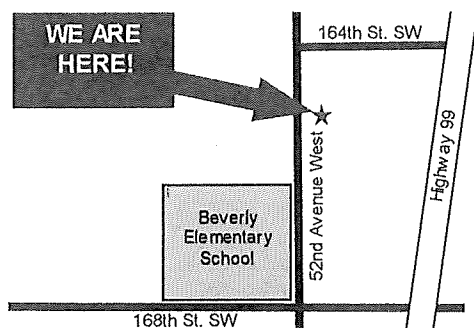
16431 52nd Avenue W.

Edmonds, WA 98026-4718

Phone: 425-743-2323

E-mail: stlc_office@frontier.com

Website: www.sainttimothylutheran.net



SUNDAY

9:00 a.m. Bible Study

10:00 a.m. Worship Service



THE
LUTHERAN CHURCH
Missouri Synod