

# NEWSLETTER



ST. TIMOTHY LUTHERAN CHURCH  
16431 52<sup>nd</sup> Avenue W. – EDMONDS, WA 98026  
TELEPHONE: (425) 743-2323

## February 2017 / March 2017 A.D. – THOUGHTS FROM THE PASTOR

Brothers and Sisters in Christ:

What are some things that people like about the winter season? Some folks may say nothing!! However, some people like to go and play in the snow. Some others are just happy to see the mountains covered with snow so that we will have lots of water next summer. Some “snowbirds” use winter as an excuse to go to some place that is sunnier and warmer than around here.

One of the things that I like about the season of winter (which started on December 21, 2016) is that after a few days the amount of daylight we receive each day from the sun begins to increase. We are told that we start gaining a minute plus in the morning and a minute plus in the evening of day light each day. The bottom line is that the nights of darkness are getting shorter -- the sun is coming up earlier and going down later!!

I thank God for the various seasons of the year. They remind us that God keeps His promises.

It is fitting that in the northern hemisphere the Christian church celebrates God's keeping His promise to send His Savior at the darkest time of the year -- as winter begins. The Gospel reading for January 22, 2017, (the 3<sup>rd</sup> Sunday after the Epiphany) mentioned that when Jesus began His earthly ministry, it was like a spiritual light had come on the scene. Matthew 4 quotes Isaiah 9 as Jesus began His public ministry around the northern end of the Sea of Galilee.

And leaving Nazareth (Jesus) went and lived in Capernaum by the sea, in the territory of Zebulun and Naphtali, so that what was spoken by the prophet Isaiah might be fulfilled: “The land of Zebulun and the land of Naphtali, the way of the sea, beyond the Jordan, Galilee of the Gentiles—the people dwelling in darkness have seen a great light, and for those dwelling in the region and shadow of death, on them a light has dawned.” From that time Jesus began to preach, saying, “Repent, for the kingdom of heaven is at hand.” [Matthew 4:13-17 ESV]

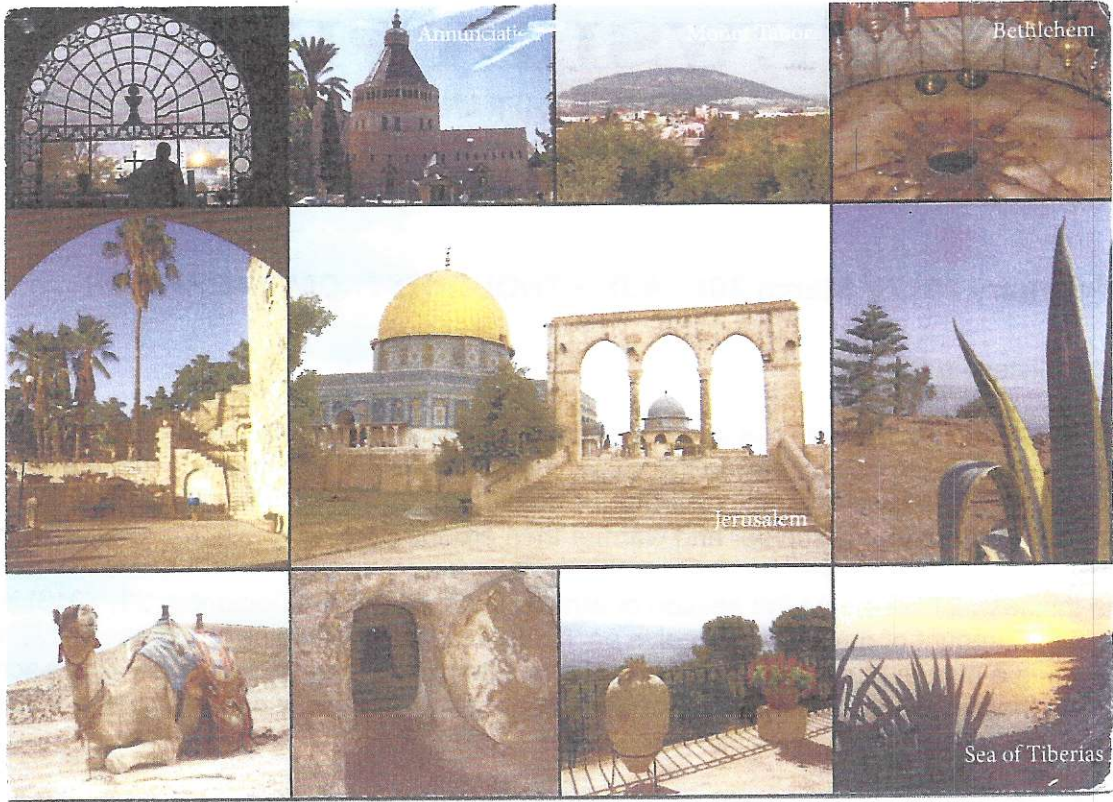
Jesus brought to those people who were mired down by sin and death, and without real spiritual hope for this life or the life to come, the refreshing love of God's Word. Jesus was like those rays of sunshine that return as the days of winter move along to springtime. Jesus brought hope, and joy, and peace, and healing, and forgiveness as He urged the people that He spoke with to repent because the kingdom of God had come in the person and work of Jesus Himself.

Jesus was bringing light which was able to shine on the only spiritual pathway that leads to eternal life in heaven. This was true for those who first heard Jesus on the north side of the Sea of Galilee, and it's true for you and me too today as the world around us continually showers us with doom and gloom and the darkness of sin in all its many forms.

We have this good news to share. So let's “bloom where we are planted” in this world for Jesus. Let's continue to share the old, old story of Jesus and His love for everyone! May Jesus use us to burst into people's lives -- unbelievers and believers alike -- with His light of forgiveness, life, and salvation that give joy and hope!

A may the love of the Lord Jesus always be in your heart!

Pastor Richard E. Flath ( [pastor\\_r\\_flath@msn.com](mailto:pastor_r_flath@msn.com) ); H: 360-568-6580; W: 425-743-2323; C: 425-210-1795 )



**In the Footsteps of Jesu:**

Hi, Rev. Flath & congregation  
 It is a wonderful thing to  
 step of Jesus Christ.  
 He is with you and me  
 forever!!!  
 Now I'm in Jerusalem,  
 old city and others.  
 God bless our all members  
 from Dongson, SHIA

פיוט ליום הכיפורים  
 YOM KIPPUR POEM  
 מועדים התשע"ז



U.S. A. 4  
 TO: Rev. R. Flath

St. Timothy Lutheran Church  
 16431 52th Av. W  
 Edmonds, WA 98026  
 U. S. A.  
 Dec. 23. 2016

Received 1-18-2017



**2016 LCMS NATIONAL OFFERING**  
The Lutheran Church—Missouri Synod

1333 S. Kirkwood Road  
St. Louis, MO 63122-7295

2900 8127992085

RECEIVED: JAN. 9, 2017

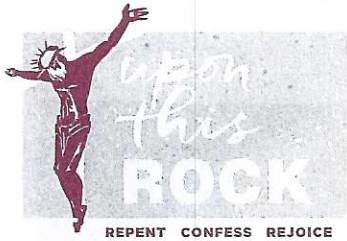
Non-Profit Org.  
U.S. Postage  
**PAID**  
St. Louis, MO  
Permit No. 146

**OUR SINCEREST THANKS** to the members of The Lutheran Church—Missouri Synod for the outpouring of support toward the 2016 LCMS National Offering. You have given the same bold confession as Peter — “You are the Christ, the Son of the living God” (Matt. 16:16) — through your participation. Each dollar will be put to work toward the one goal of building others up into living stones so that people here and around the world who do not yet know the love of Christ may find in Him the “solid rock” on which they may stand.

For regular updates on the 2016 LCMS National Offering, including the growing total collected and the use of donations, go to [lcms.org/national-offering](http://lcms.org/national-offering).

AUTO-VOIDED AADC 630  
0-16720931  
SAINT TIMOTHY LUTHERAN CHURCH  
16431 92ND AVE W  
EDMONDS WA 98026-4710

19



# 2016 LCMS National Offering



—THANK YOU—

*The National Offering embodies our walk together in **WITNESS, MERCY** and **LIFE TOGETHER** as we proclaim the Gospel and provide for our brothers and sisters in Christ in our congregations, communities and throughout the world.*

## Council Report – Mel Suelzle



December 31<sup>st</sup> marked the end of our second quarter of fiscal year 2017. The financial results for this halfway point of the fiscal year are shown below. Our contribution income exceeded our plan by over 8% or \$3738. This resulted from all types of contributions including almost \$1700 to our mortgage fund that was not budgeted for the year. Expenses were over our budgeted amounts by 3% or \$1468. As result our income after expenses was \$2272 above our plan for the first half of our fiscal year.

### Mid-Year Financial Report for FY2017 July – December

Income	Budget	Actual		Remaining \$\$
Worship Service Offerings	40,051	41,410	103%	-1,359
Mortgage Fund Donations	0	1,690		-1,690
Building Fund Donations	4,552	5,331	117%	-779
Facility Use/Other Income	1,330	1,240	93%	90
<b>Total Income</b>	<b>45,933</b>	<b>49,671</b>	<b>108%</b>	<b>3738</b>
Expense				
Elders	22,178	22,751	103%	-573
Trustees	7,750	8,318	107%	-568
Council	9,334	9,682	104%	-348
Administration	2,745	2,494	91%	251
Worship & Music	3,938	4,287	108%	349
Education	40	19	47%	21
Fellowship	650	140	22%	510
Stewardship	150	200	133%	50
Evangelism	408	768	188%	-360
<b>Total Expense</b>	<b>47,193</b>	<b>48,659</b>	<b>103%</b>	<b>-1,466</b>
<b>Income Less Expense</b>	<b>-1,260</b>	<b>1,011</b>	<b>80%</b>	<b>-2,272</b>

### Burning the Mortgage

On November 20<sup>th</sup>, we had a special “Burn the Mortgage” ceremony. This mortgage was taken in 2007 with Lutheran Church Extension Fund to pay construction of our new Narthex. A portion of the proceeds of our property sale was used to pay of the balance of \$195,569.



### Parking Lot Lighting Project

During December the men’s group completed the installation of new parking lot lighting. A lamp post was installed to mark the new driveway. A couple of weeks later we received the 16’ pole and LED fixture for the northwest corner of the parking lot. This pole replaces the light and pole that had to be removed as it was powered with line over the property we sold. We will see if this provides sufficient lighting for our parking lot. Based on our recent experience we will in all likelihood, install two more of these LED lights on the south edge of the parking lot to better illuminate the areas used most often for parking nearest the main walkways and entrance.

# FELLOWSHIP NEWS

Please Remember in Your Prayers:

**Our homebound members:**

Barbara; Wilma; Millie; Gertrud; Alex

**Folks with Health Concerns:**

Wayne; Wilma; Doug; Liese  
Members family and friends:  
Gail; John; Jenae; Joel; Todd; Raymond

**Those with Birthdays:**

February 21 - Lenn Gorsuch  
21 - Michael Miller  
March 1 - Chris Allen  
17 - Thirza Weber  
21 - Millie Molenda

**Those with a Wedding Anniversary:**

February 12 - Chris and Jeanne Allen  
March 19 - Jim and Thirza Weber

Please inform Pastor Flath if any birthdays and wedding anniversaries have been overlooked.

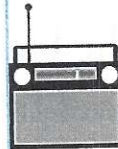
## LUTHERAN HOUR MINISTRIES

Listen to:

**THE LUTHERAN HOUR**  
Sundays



6:00 a.m. – 1320 AM KXRO  
6:30 a.m. – 880 AM KIXI  
7:00 a.m. – 1380 AM KRKO  
7:00 a.m. – 107.3 FM KAWZ  
7:00 a.m. – 105.3 FM KCMS  
9:30 a.m. – 1180 AM KLAY



**NOTE:** Carol Hauge informs us that Campbell's has **stopped** their program. Thank you to everyone who over the years has turned in their Campbell's UPCs to help support Bethesda Lutheran Homes.

## OUR CHURCH NEWSLETTER IS ONLINE

The St. Timothy monthly newsletter and calendar is available online! To catch up on current news, events, and see what we have scheduled in this month's calendar, please visit:

[www.sainttimothy.lutheran.net](http://www.sainttimothy.lutheran.net)

Let us know if you prefer to read your St. Timothy news online, and we will print one less copy – email us at:  
[stlc\\_office@frontier.com](mailto:stlc_office@frontier.com)

## April & May NEWSLETTER

Newsletter Articles and Calendar information need to be submitted by

**Tuesday, March 21, 2017!**

Please have all information printed or handwritten and place in the NEWSLETTER mailbox, OR hand it to Pastor Flath, OR send it via e-mail to [stlc.office@frontier.net](mailto:stlc.office@frontier.net).

Please let us know if we have missed your birthday or anniversary. Thanks! 😊

# "JOURNEY OF FAITH TO THE BIBLE LAND"

VISIT THE LAND OF THE BIBLE

WITH

*PASTOR JIM KYES*

*OF ST. PETER THE FISHERMAN LUTHERAN  
CHURCH IN LINCOLN CITY, OREGON*

Visit with us The Promised Land.

The land God chose for the birth of Jesus. Travel from Bethlehem to the Garden Tomb. Walk the Via Delarosa. Visit the Mount of Olives and the Garden of Gethsemane. Visit Caesarea on the Mediterranean Sea, and Mt. Carmel where God caused Elijah to defeat the priests of Baal. Come with us to Capernaum where Peter built his house and Jesus preached.

We will visit the Mount of Transfiguration, the Mount of Beatitudes, Caesarea Philippi in the Upper Galilee. Sail on the Sea of Galilee and enjoy a St. Peter's fish lunch. Climb the Judean hills to the most beautiful city in the world, Jerusalem. Journey with us to Qumran where the dead sea scrolls were found and float weightless in the Dead Sea.

And much more!

Full tour guide and information is available on our website

[stpeterlc.com](http://stpeterlc.com)

**September 11 - 21<sup>st</sup>**

**For more information or to order a tour guide,  
contact the church at**

**541-994-8793/[stpeterlc@yahoo.com](mailto:stpeterlc@yahoo.com) or**

**All Ways Traveling at**

**[allways@charter.net](mailto:allways@charter.net)/541-996-7474**



# LADIES GUILD NEWS

**Ladies' Guild Meetings**  
Meetings are held every 2<sup>nd</sup> Tuesday of the month in the Fellowship Hall beginning at 1:00 p.m. The next meeting is scheduled for February 14, 2017. All ladies are welcome!



*SERVE THE LORD  
WITH GLADNESS*  
Psalm 100:2

**LWML MISSION MITES**  
are collected on the fourth Sunday of every month. Please bring yours on February 26<sup>th</sup> & March 26<sup>th</sup>.  
Donations will be collected during the church service when you come to the front for communion.



The Ladies Guild purpose is to provide the women of St. Timothy Lutheran Church the opportunity to increase their knowledge of our Savior, and to benefit from fellowship and service to the Lord.

## Ladies Guild Notes:

**Socks** of various types and styles were gathered for Pathways for Women during the month of December 2016. Thanks to everyone who donated socks. They were received with joy!

**LWML Lenten Prayer Service** will be Saturday morning, February 25, 2017, at Epiphany Lutheran Church in Kenmore.

**Mites** for projects of the Lutheran Women's Missionary League are collected during the worship service on the 4<sup>th</sup> Sunday of each month. An oversized Mite Box is placed before our altar to receive your generous donations. For over 60 years, mites have been gathered in many congregations across our Synod to support various mission ventures locally and around the world. We thank the Lord that pennies, nickels, dimes, and quarters (as well cash) have added up over the years to accomplish much for the Kingdom of God.

**Small Mite Boxes** are available in the Narthex for your monthly collecting of coins.

////////////////////////////////////  
**Red mesh stocking project:** a monthly coin collecting project is underway. Ask Grace for a red mesh stocking if you would like to be a part of this social project. Please put a few coins into your stocking each month. Then you will be asked to bring it to church in December. Your coins will be gathered together with those of fellow church members. The funds will go to special Christmas gifts to those needy in the congregation and /or to local charities.

**AA** (alcoholics anonymous) groups hold evening meetings 4 days each week in Room 1.

**Copies** of past issues of The Lutheran Witness are in the Narthex. Please feel free to take any of the past issues home with you to read.

WWW SITE  
www.sainttimothy.lutheran.net

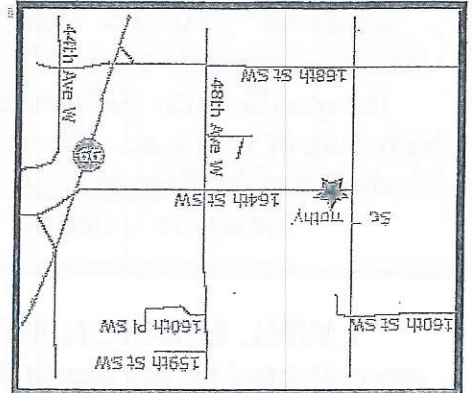
E-MAIL  
sttc\_office@frontier.com

PHONE NUMBER  
Church - 425-743-2323



9:00 a.m. Sunday school and adult Bible Study  
10:00 a.m. Worship Service  
11:15 a.m. Fellowship in Fellowship Hall

**SUNDAY'S FOR FAMILIES**



Edmonds, WA 98026-4718

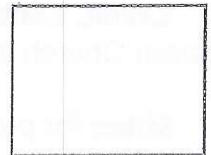
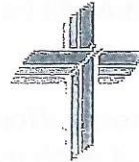
16431 52<sup>nd</sup> Avenue W.

Southwest Snohomish County

Serving Lynnwood, Edmonds, and

St. Timothy Lutheran Church

**St. Timothy Lutheran Church**  
**16431 52<sup>nd</sup> Avenue W.**  
**Edmonds, WA 98026-4718**  
(Address Correction Requested)



Mel Suelzle  
2731 184<sup>th</sup> Place S.E.  
Bothell, WA 98012







**Saint Timothy Lutheran Church**  
 16431 52nd Avenue W EDMONDS, WA 98026  
 Office: (425) 743-2323

# February 2017 A.D.

Sunday	Monday	Tuesday	Wednesday	Thursday	Friday	Saturday
<b>9:00 a</b> Bible Study <b>9:15 a</b> Sunday School <b>10:00 a</b> Worship Service	<b>6:30p Elders Mtg</b> (3) 7:00p AA Meeting (1)	<b>1:00 p Ladies Guild</b> (F)	<b>9:30a Bible Class</b> (F) 7:00p AA Mtg. (1)	7:00p AA Mtg. (1)	8:30a Men's Breakfast (F) 10:00a Girl Scouts (4) 7:30p AA Mtg. (1)	<b>8:30a Men's Breakfast</b> (F) 10:00a Girl Scouts (4) 7:30p AA Mtg. (1)
<b>9:00 a</b> Bible Study <b>9:15 a</b> Sunday School <b>10:00 a</b> Communion Service <b>11:15 a</b> Potluck	<b>7:00p AA Meeting</b> (G)	<b>1:00 p Ladies Guild</b> (F)	<b>9:30a Bible Class</b> (F) <b>7:00 p Council Meeting</b> (3) 7:00p AA Mtg. (1)	Life Screening uses STLC facilities 7:00p AA Mtg. (1)	<b>8:30a Men's Breakfast</b> (F) 10:00a Girl Scouts (4) 7:30p AA Mtg. (1)	<b>8:30a Men's Breakfast</b> (F) 10:00a Girl Scouts (4) 7:30p AA Mtg. (1)
<b>9:00 a</b> Bible Study <b>9:15 a</b> Sunday School <b>10:00 a</b> Worship Service	<b>Presidents Day</b> (church office closed) 7:00p AA Meeting (G)	<b>9:30 a Circuit 20 Pastors</b> (in Seattle)	<b>9:30a Bible Class</b> (F) 7:00p AA Mtg. (1)	7:00p AA Mtg. (1)	<div style="border: 1px solid black; padding: 5px;"> <b>Key:</b>            Fellowship Hall (F)            Sunday School (SS)            Room 1 (1)            Room 3 (3)            Room 4 (4)         </div> 10:00a Girl Scouts (4) 7:30p AA Mtg. (1)	10:00a Girl Scouts (4) 7:30p AA Mtg. (1)
<b>9:00 a</b> Bible Study <b>9:15 a</b> Sunday School <b>10:00 a</b> Communion Service – MITES collected	<b>7:00p AA Meeting</b> (G)	28	28	28	28	28



**Saint Timothy Lutheran Church**  
 16431 52<sup>nd</sup> Avenue W EDMONDS, WA 98026  
 Office: (425) 743-2323

# March 2017 A.D.

Sunday	Monday	Tuesday	Wednesday	Thursday	Friday	Saturday
5 <b>9:00 a Bible Study</b> <b>9:15 a Sunday School</b> <b>10:00 a Worship Service</b>	6 <b>7:00p AA Meeting (1)</b>  <b>6:30p Elders Mtg (3)</b>	7 <b>9:30a Bible Class (F)</b>  <b>No service</b> <b>7:00p AA Mtg. (1)</b>	8 <b>9:30a Bible Class (F)</b>  <b>No service</b> <b>7:00p AA Mtg. (1)</b>	9 <b>7:00p AA Mtg. (1)</b>  <b>7:00p AA Mtg. (1)</b>	10 <b>10:00a Girl Scouts (4)</b> <b>7:30p AA Mtg. (1)</b>	11 <b>8:30a Men's Breakfast (F)</b>  <b>10:00a Girl Scouts (4)</b> <b>7:30p AA Mtg. (1)</b>
12 <b>9:00 a Bible Study</b> <b>9:15 a Sunday School</b> <b>10:00 a Communion Service</b>	13 <b>7:00p AA Meeting (G)</b>	14 <b>1:00 p Ladies Guild (F)</b> <b>7:00 p Council Meeting (3)</b>	15 <b>9:30a Bible Class (F)</b>  <b>No service</b> <b>7:00p AA Mtg. (1)</b>	16 <b>7:00p AA Mtg. (1)</b>	17 <b>8:30a Men's Breakfast (F)</b>  <b>10:00a Girl Scouts (4)</b> <b>7:30p AA Mtg. (1)</b>	18 <b>8:30a Men's Breakfast (F)</b>  <b>10:00a Girl Scouts (4)</b> <b>7:30p AA Mtg. (1)</b>
19 <b>9:00 a Bible Study</b> <b>9:15 a Sunday School</b> <b>10:00 a Worship Service</b>	20 <b>7:00p AA Meeting (G)</b>	21 <b>9:30 a Circuit 20 Pastors (in Seattle)</b> <b>Newsletter Items Due Today</b>	22 <b>9:30a Bible Class (F)</b>  <b>No service</b> <b>7:00p AA Mtg. (1)</b>	23 <b>7:00p AA Mtg. (1)</b>	24 <div style="border: 1px solid black; padding: 5px; width: fit-content;"> <b>Key:</b>              Fellowship Hall (F)              Sunday School (SS)              Room 1 (1)              Room 3 (3)              Room 4 (4)           </div>	25 <b>10:00a Girl Scouts (4)</b> <b>7:30p AA Mtg. (1)</b>
26 <b>9:00 a Bible Study</b> <b>9:15 a Sunday School</b> <b>10:00 a Communion Service</b> – MITES collected	27 <b>7:00p AA Meeting (G)</b>	28 <b>9:30a Bible Class (F)</b>  <b>No service</b> <b>7:00p AA Mtg. (1)</b>	29 <b>9:30a Bible Class (F)</b>  <b>No service</b> <b>7:00p AA Mtg. (1)</b>	30 <b>7:00p AA Mtg. (1)</b>	31 <b>NOTE:</b> <b>Easter is celebrated this year on April 16<sup>th</sup></b>	