



NEWSLETTER

ST. TIMOTHY LUTHERAN CHURCH
5124 164TH ST. S.W. – EDMONDS, WA 98026
TELEPHONE: (425) 743-2323

October 2014 A.D. – THOUGHTS FROM THE PASTOR

Brothers and Sisters in Christ:

My thoughts for October are centered around the LCMS booth that 10 LCMS congregations in Snohomish County supported this summer at the 2014 Evergreen State Fair in Monroe (Aug 21 - Sep 1). This was the 5th year for an LCMS booth. St. Timothy has supported this endeavor with funds and workers for the last couple of years.

I noticed this year that there were less volunteers to help man the booth than in years past. But from the follow up meeting that I attended 10 days after the fair ended, many of those who took 2 hour shifts in the LCMS booth had wonderful stories to tell about how the Lord used our efforts to share the Gospel of Jesus Christ with the fair goers who passed by our booth.

Along with pencils with John 3:16 printed on them, this year we had many used NIV large print Bibles to give away free. Many folks that I spoke with found it hard to believe that those Bibles were free. A few people were glad to see the large print because their eyesight was getting to the point of needing larger print.

During my 2nd 2 hour shift with my son-in-law John, 2 ladies stopped at the LCMS booth. The one who spoke English like most of us do had brought a Chinese lawyer from China to the fair. This lawyer was taking a class at the U. of Washington. The English speaker was attempting to explain to the Chinese lawyer what our booth was all about. That gave me an opportunity to have a conversation with them that included speaking about Jesus Christ as I explained our booth.

As they were about to move on, I offered the person from China one of the large print Bibles plus a copy of the Arch book that we were passing out to kids and others who wanted one. She took one of each to take back with her. I saw that she was curious about the small wooden crosses scattered on the table. They had been hand made by a couple of men to be given away for free too. Since the Chinese lawyer didn't know anything about Jesus, it was clear that the cross was a bit much for her at this time in her life, so she didn't take one.

And just like that they were gone.

You might be wondering why I bring up the LCMS fair booth at this time. One reason that I did this is so that we might continue to pray and ask the Lord to bless the work that many people did in the name of Jesus Christ during this year's fair. Pray that the Lord bless all the Bibles, pencils, Arch books, etc, that were given away for free.

A second reason is remind you that Jesus is a free gift given to us by grace. Many people had a hard time believing that everything we gave away at the LCMS booth was free. Some even asked how much they should pay for one of those free Bibles. But there is no price that we should ever put on the Gospel of Jesus Christ! Salvation is a free gift from our heavenly Father who loves the world of sinful people. May the Lord bless all our efforts in sharing the love of Jesus Christ with other people!

May the love of the Lord Jesus always be in your heart!

Pastor Flath (pastor_r_flath@msn.com) H: 360-568-6580 W: 425-743-2323 C: 425-210-1795



September 2014

Dear Saint Timothy Lutheran Church of Lynnwood,

One of the most important reasons the LCMS was formed was so that congregations and their members could combine energy and resources for the purpose of recruiting and training pastors and providing opportunities for their continuing growth. Such a monumental task is better suited to a unified effort by all 6,200 congregations than for any one congregation to try to attempt on its own. For 165 years, we have been blessed by such a unified effort and by two of the world's very best theological seminaries.

It is a different environment today from when the Synod was formed, yet we continue in our labors to meet a need — a growing need — for pastors, deaconesses and other theologically trained leaders. Like you, our Synod's congregations still expect, even demand, that their servant leaders be as well educated as possible.

At the same time, the cost of providing high-quality theological education and delivering much-needed student services to seminarians and their families increases and exceeds what The Lutheran Church—Missouri Synod's national office can supply each year in unrestricted operating subsidy. That subsidy is funded exclusively by Sunday-morning worship offerings forwarded by congregations to their districts and from districts to the Synod.

In response to that hard reality, both seminaries turn directly to congregations and LCMS households for additional financial help. Through their own advancement efforts, both seminaries solicit charitable gifts and bequests to fund annual operations, student financial aid, endowment and capital expenditures.

The Synod's national office, recognizing that annual unrestricted subsidy is insufficient, also solicits restricted gifts to support seminaries by promoting The LCMS Joint Seminary Fund. With a single convenient gift or pledge, a congregation or family is able to support both seminaries. The Synod also accepts gifts restricted by a donor for the support of a preferred seminary and disburses that gift to the designated institution.

Regardless of how financial support is sent, every gift from every individual, family, congregation or group ensures that our Synod's congregations and ministries benefit from adequately funded seminaries. This funding model, complex as it may seem, is a marvelous example of how we in the LCMS live out our life together in order to vigorously make known the love of Jesus Christ throughout the world.

Many congregations — and perhaps yours — are in the process of preparing budgets for the coming year. Among the countless mission and ministry opportunities available for your congregation to consider, we earnestly desire again to lift up the central opportunity to financially support our two world-class seminaries. Both are given the responsibility for educating and sending out fresh waves of faithful, well-qualified Lutheran pastors, deaconesses and other theological leaders.

We again, therefore, appeal to you to prayerfully discuss and discern how your congregation's members can be directly involved in financially supporting our LCMS seminaries so that costs do not have to be borne by our seminarians and their families. A commitment of funding for our seminaries, through the congregation's budget and as always as the Lord allows, is a worthy topic of discussion and prayer.

The LCMS Joint Seminary Fund is one option for how we as a Synod act together under the Gospel to accomplish this work and meet these expectations. It is a visible commitment by LCMS leadership to raise funds restricted exclusively for the operational support of our seminaries, augmenting what can be provided each year in subsidy from the Synod's available unrestricted funds. If your congregation views The LCMS Joint Seminary Fund as a worthy option for routing its support, please make use of the enclosed material. If you prefer to partner directly with our seminaries, contact information for each advancement office is provided below, along with contact information for The LCMS Joint Seminary Fund.

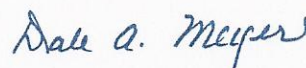
Most cordially,



Rev. Dr. Lawrence R. Rast Jr.
President
Concordia Theological Seminary
Fort Wayne, Ind.



Rev. Dr. Matthew C. Harrison
President
The Lutheran Church—
Missouri Synod



Rev. Dr. Dale A. Meyer
President
Concordia Seminary
St. Louis, Mo.

ADDITIONAL RESOURCE AND CONTACT INFORMATION

Concordia Theological Seminary
Office of Institutional Advancement
Attn: Rev. Jon D. Scicluna
VP for Resource Development
6600 N. Clinton Street
Fort Wayne, IN 46825
1-877-287-4338
Email: jon.scicluna@ctsfw.edu
www.ctsfw.edu

Concordia Seminary
Office of Seminary Advancement
Attn: Tom Rehkop
Executive Director of Gift Planning
801 Seminary Place
St. Louis, MO 63105
1-800-822-5287
Email: rehkopt@csl.edu
www.csl.edu

The Lutheran Church—Missouri Synod

The LCMS Joint Seminary Fund

Attn: Mark D. Hofman, Director (Interim), The LCMS Joint Seminary Fund
or Julie Loehring, Coordinator, The LCMS Joint Seminary Fund
1333 S. Kirkwood Road
St. Louis, MO 63122
1-800-248-1930, ext. 1315
Email: mark.hofman@lcms.org
www.lcms.org/jointseminaryfund

THRIVENT FOR LUTHERANS

Central Snohomish County Chapter, FALL 2014 NEWSLETTER FREE MEMBERSHIP DINNER - SATURDAY EVENING - OCTOBER 25, 2014

A delicious home-made dinner and social will take place at Zion Lutheran Church, Fellowship Hall, behind the church, 4th Avenue and Union Street, in Snohomish. The program will begin at 5:30 pm with dinner served at 6 pm. A fun event, excellent meal and fellowship time too.

Dinner reservations: call Judy, office manager at Zion Lutheran in Snohomish, 360-568-2700 or zionsecretary@frontier.com

All expenses paid by your chapter and Thrivent Financial. FREE dinner. FREE door prizes, FREE batting for church quilting groups, FREE Thrivent branded merchandise.

We will be honoring some volunteers from chapter member congregations. To nominate someone special, please provide their name plus a brief description of the volunteers work at your church or other charitable project. Volunteers do not have to be Thrivent members.

FREE DOCUMENT SHREDDING AND EDUCATION EVENT OCTOBER 18TH

A FREE community shredding event will be held from 9 am until 1 pm at Prince of Peace Lutheran, 9320 Meadow Way, Everett. Ewaste may be accepted too (arrangements tentative). An education event will take place at 10:30 am in the church building, Thrivent Action Teams, what they are and how to get involved in doing good things for neighbors in need in your community. Plus a hot dog and salad luncheon at 11:30, plus fellowship time with other attendees. All welcome.

CHAPTER VOLUNTEERS & ACTIVITIES DURING PAST 12 MONTHS

**74 attended Lutheran Night at the Aquasox; \$625 collected and given to VOA Food Bank

**Thanksgiving food baskets delivered by over 80 volunteers to 350 families in need. Over \$7000 provided by chapter and Thrivent Financial to supplement food donated or purchased

**32 rolls of quilt batting purchased by your chapter and Thrivent Financial, given to 16 Lutheran congregations with over 150 volunteer quilt makers. Over 1200 quilts made and given to Lutheran World Relief use plus local hospitals and charities

**fundraisers at ELCA and LCMS churches to benefit Lutheran seminary and deaconess students



Bethesda Auxiliary
Bethesda Lutheran Communities

August 31, 2014

St. Timothy's Lady Guild
5124 164th St SW
Edmonds, WA 98026

Thank you for the \$135.75 donation to *Bethesda Lutheran Communities Auxiliary* from your bake sale earlier this year. All of these efforts support people whom we serve in the Bethesda Homes

The Auxiliary thanks God for the many blessings bestowed upon us individually and as a ministry. We provide services to the people that we serve to help them meet their individual life style goals while surrounding them in Christian love and care.

Your continued prayers and support are greatly appreciated by all of us at *Bethesda Auxiliary*.

Reaching Forward in Faith,

Janet Broadus
16332 110th Ave NE
Bothell, WA 98011
Financial Secretary

Bethesda Lutheran Communities Auxiliary acknowledges that no goods or services were received in exchange for this gift.

NEWS FLASH!

The annual Bazaar sponsored by the Ladies Guild date has been changed to November 8th -- but the time of this event remains the same: 9:00 a.m. in the morning to 2:00 p.m. in the afternoon.

This gives everyone who is preparing items an extra week! Set up will now be on Friday, November 7th beginning at 10:00 a.m. in the morning. Funds raised by this event goes to help support projects of mission work in the world and community as well as for work here at St. Timothy.

LADIES GUILD NEWS

Ladies' Guild Meetings

Meetings will be resuming this month. They are held every third Tuesday of the month. Our next one will be on October 21st at 1:00 PM

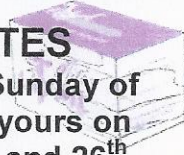


*SERVE THE LORD
WITH GLADNESS*

Psalm 100:2

LWML MISSION MITES

are collected on the fourth Sunday of every month. Please bring yours on October 5th [LWML Sunday] and 26th. Donations will be collected during the church service when you come to the front for communion.



The Ladies Guild purpose is to provide the women of St. Timothy Lutheran Church the opportunity to increase their knowledge of our Savior, and to benefit from fellowship and service to the Lord.

MISSION POST -- OCTOBER NEWSLETTER

To Be A Pumpkin

When asked what it was like to be a Christian, a recently baptized lady replied –

“It’s like being a pumpkin. God picks you from the patch, brings you in and washes all the dirt off that you may have gotten from other pumpkins. Then He cuts off and scoops out all the yucky stuff. He removes the seeds of doubt, hate, and greed. He then carves you a new smiling face and puts His light inside of you to shine for all the world to see.”

Let your light shine. [Submitted by Pat Jones]

The Gospel According to You

The Gospels of Matthew, Mark, Luke and John,
Are read by more than a few,
But the one that is most read and commented on
Is the gospel according to *you*.

You are writing a gospel, a chapter each day
By things that you do and words that you say,
Men read what you write, whether faithless or true.
Say, what is the gospel according to *you*?

Do men read His truth and His love in your life,
Or has yours been too full of malice and strife?
Does your life speak of evil, or does it ring true?
Say, what is the gospel according to *you*?

OCTOBER

Important News & Dates

GOOD & FAITHFUL SERVANTS

~ October 2014 ~

USHERS:

- Oct. 5th Lenn Gorsuch
Doug Spaulding
Communion – Lenn Gorsuch
- Oct. 12th Charlie Stewart
Willie Whitfield
Communion – Lenn Gorsuch
- Oct. 19th Karl Simon
Steve Kennedy
- Oct. 26th Gary Eneberg
Doug Spaulding
Communion – Lenn Gorsuch

- READERS: Oct. 5th – Gary Normington
Oct. 12th – Charlie Stewart
Oct. 19th – Linda Gorsuch
Oct. 26th – Grace Hundtoft

- GREETERS: Oct. 5th – Shirley Bodenstab
Oct. 12th – Mary Stewart
Oct. 19th – Ruth Walker
Oct. 26th – Carol Hauge

THANK YOU NOTE:

Nicole Skrede, who has faithfully set up the weekly church bulletin and the monthly newsletter so that they could be printed, has taken on a long term substitute teaching position in Oregon. Therefore, she is no longer able to continue doing that for St. Timothy.

As a congregation, we wish to thank her for her devoted work and faithful service over the months since she began. We pray that the Lord would bless her in her new teaching position.

POST-A-NOTE

~ OCTOBER 2014 ~

Sep 30 – Oct 2: Pastor @ Pastors Conference

Oct 1st -- no morning Bible Study

Oct 4th – 8:30 a.m. Men's Breakfast [Fellowship Hall]

Oct 5th -- LWML Sunday: MITES received today too

Oct 7th – 6:30 p.m. Elders Meeting [Youth Room]

Oct 15th – 7:00 p.m. Council Meeting

Oct 18th – 8:30 a.m. Men's Breakfast [Fellowship Hall]

Oct 21st -- 9:00 a.m. Circuit Pastor Meeting @ STLC

1:00 p.m. Ladies Guild

November Newsletter items due today

Oct 26th – MITES received during service today.

FLOWER CHART

~ October 2014 ~

10/5 – Simon's Birthday

10/12 – Normington family

10/19 – Debbie Zaske birthday

10/26 – Mary Stewart birthday

Please consider placing flowers on the altar to the glory of our Lord and the many blessings we receive each day.

Sign-up Sheet is on the "Service" Bulletin Board in the Narthex.

FELLOWSHIP NEWS

BIBLE STUDIES AT ST. TIMOTHY

Sunday Morning before service from 9:00 – 9:45 AM in the Fellowship Hall. We are studying the book of Exodus at this time.

Wednesday Morning Bible Study –

If you are able, please join us weekly in the Fellowship Hall from 9:30 to 11:00 am for Bible Study. We are digging into the Gospel of Matthew this Fall. Both men and women are invited to dig deeper into the Word of God with their brothers and sisters in Christ.



Issues, Etc.
Christ-Centered Cross-Focused Talk Radio

TALK RADIO FOR RECOVERING EVANGELICALS.... You can listen to interviews on many different topics.

Issues, Etc. is a radio talk show hosted by LCMS Pastor Todd Wilken and produced by Lutheran Public Radio in Collinsville, IL. You can listen to what you want when you want at www.issuesetc.org.

St. Timothy Prayer Team



Patsy Simon (425) 670-3354
Pat Jones (425) 379-7077
Carol Hauge (425) 743-9430
Laura Washabaugh (425) 741-0517
Kim Reinig (206) 542-8050
Pastor Flath C: (425) 210-1795

Phone Patsy Simon to begin the prayer.

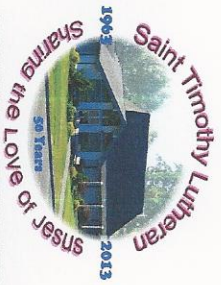
Contact any member of the Prayer Team to request prayer support - confidentially or to one member of the team. No need is too small or answered prayer too little, to neglect to mention it to our Heavenly Father.

“Be joyful in hope, patient in affliction, faithful in prayer.” **Romans 12:12**



REFORMATION RUSH HOUR

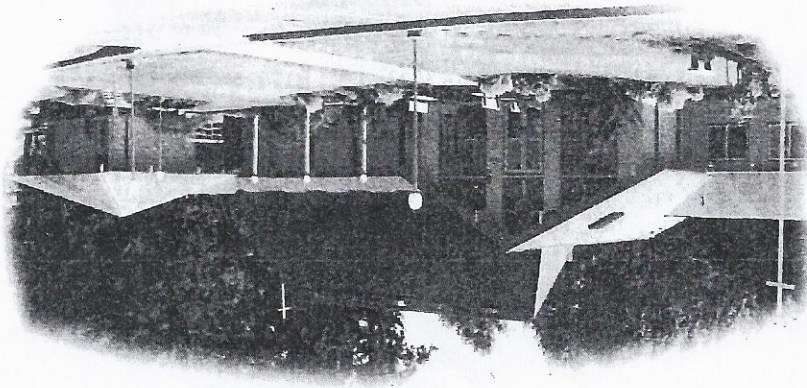
Have you listened yet on your Lutheran Radio Station Worldwide KFUO? **Reformation Rush Hour** is an all new program discussing religious news items, what's going on around the various organizations and districts of the Lutheran Church Missouri Synod, a little church history, a segment that host Rev. Donofrio calls “Lutheran on Purpose” in which you will hear stories from people around the world who converted to Lutheranism from other churches and religions, and much, much more. Weekdays at 5 pm CST (3 pm PST)! Follow us on: www.facebook.com/KFUORadio. Streaming and archived at www.kfu.org.



Saint Timothy Lutheran Church
 5124 164th ST SW EDMONDS, WA 98026
 Office: (425) 743-2323

October 2014 A.D.

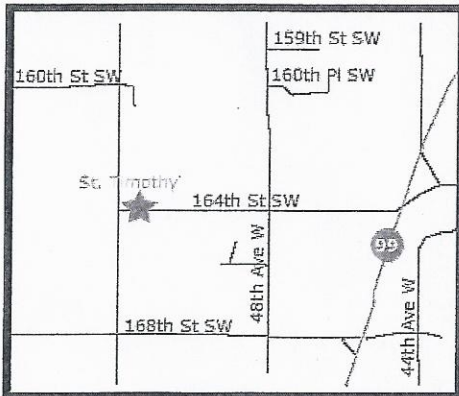
Sunday	Monday	Tuesday	Wednesday	Thursday	Friday	Saturday
October Birthdays 1 - George Rudy 11 - Sandy Flath	21 - Debbie Zaske 31 - Mary Stewart	Pastor Flath at NW District Pastors Conf 9/30-10/2	1 9:30a no Bible Class [F] 7:00p AA Mtg. [G]	2 6:30p Cub Scouts [F]	3 8:30a Men's Breakfast (G)	4 7:30p AA Mtg. (G)
5 9:00a SS & Bible Study 10:00a Communion Service LVMML Sunday & Reception	6 7:00p Boy Scouts (F) 7:00p AA Meeting (G)	7 6:30p Elders Mtg.	8 9:30a Bible Class [F] 7:00p AA Mtg. [G]	9 6:30p Cub Scouts [F] 7:00p AA Mtg (G)	10 Key: (G) Green Room (F) Fellowship Hall (Y) Youth Room	11 7:30p AA Mtg. (G)
12 9:00a SS & Bible Study 10:00a Communion Service	13 7:00p Boy Scouts (F) 7:00p AA Meeting (G)	14 9:00a Circuit Pastor Mtg. @ St. Timothy	15 9:30a Bible Class [F] 7:00p AA Mtg. [G] 7:00p Council Meeting	16 6:30p Cub Scouts [F] 7:00p AA Mtg (G)	17 8:30a Men's Breakfast (G) 7:30p AA Mtg. (G)	18
19 9:00a SS & Bible Study 10:00a Worship Service	20 7:00p Boy Scouts (F) 7:00p AA Meeting (G)	21 9:00a Ladies Guild NEWSLETTER ITEMS DUE TODAY	22 9:30a Bible Class [F] 7:00p AA Mtg. [G]	23 6:30p Cub Scouts [F] 7:00p AA Mtg (G)	24 7:30p AA Mtg. (G)	25
26 9:00a SS & Bible Study 10:00a Communion Service - MITES collected	27 7:00p Boy Scouts (F) 7:00p AA Meeting (G)	28	29 9:30a Bible Class [F] 7:00p AA Mtg. [G]	30 6:30p Cub Scouts [F] 7:00p AA Mtg (G)	31 October Anniversaries Please let Pastor Flath know if you have a birthday or anniversary that did not get on the October calendar. Thank you!	26



ST. TIMOTHY LUTHERAN CHURCH
 5124 164th St. SW
 Edmonds, WA 98026-4833
 (Address Correction Requested)

St. Timothy Lutheran Church
Serving Lynnwood, Edmonds and
Southwest Snohomish County

5124 164th St. SW
Edmonds, WA 98026-4833



SUNDAY'S FOR FAMILIES

9:00 a.m. Sunday school and adult Bible Study
 10:00 a.m. Worship Service
 11:15 a.m. Fellowship in Fellowship Hall



PHONE NUMBER
 Church – 425-743-2323

E-MAIL
stlc_office@frontier.com

WEB SITE
www.sainttimothylutheran.net