

NEWSLETTER

ST. TIMOTHY LUTHERAN CHURCH
5124 164TH ST. S.W. – EDMONDS, WA 98026
TELEPHONE: (425) 743-2323

FEBRUARY 2014 A.D. – THOUGHTS FROM THE PASTOR

Brothers & Sisters in Christ,

An annual meeting is necessary for every organization that is incorporated in the state of Washington. Since Saint Timothy Lutheran Church is incorporated in Washington state, we met this requirement for a 2014 annual meeting after worship on January 19th.

It was well attended by the membership of our congregation. There was a good **report** of many of the activities that took place during 2013 with our congregation.

After the meeting, I thought about the **report** that Paul and Barnabas gave to the church in Antioch on their return from their 1st missionary journey. Acts 14: 24-27 (ESV) states

Then they passed through Pisidia and came to Pamphylia. And when they had spoken the word in Perga, they went down to Attalia, and from there they sailed to Antioch, where they had been commended to the grace of God for the work that they had fulfilled. And when they arrived and gathered the church together, they declared all that God had done with them, and how he had opened a door of faith to the Gentiles.

A summary of their full **report** to the church in Antioch is Acts chapters 13 and 14 if you care to read it for yourself.

Our annual meeting **reported** on many of the activities that we as a congregation were involved with and on what we did together during the past year. This is a good thing for God's people to do from time to time. For when we remember the actions that God has blessed in our midst, then we can thank and praise Him for His gracious dealings with us.

The positive, Godly actions and accomplishments of our past can help us as we look towards the future. So, what will we be able to **report** at our next annual meeting? What will we be doing the same, and what will we do new, to continue to be "**the salt of the earth**" and "**the light of the world**" [Matthew 5] for our Savior Jesus Christ in our community?

But before we head off into our future, we thanked the good Lord once again for His 50 years of blessings on the gospel of Jesus Christ through us in this community. The Lord has been faithful.

And we pray that the Lord would continue to bless our efforts for Jesus Christ now and in the future -- whatever those efforts might be. And because God loves all people, keep on praying to the Lord that He continues to open doors for the gospel of Jesus Christ to be proclaimed through us here at Saint Timothy in our neighborhood.

May the love of the Lord Jesus always be in your heart!

Rev. Richard E. Flath

pastor_r_flath@msn.com

Home (360) 568-6580

Work (425) 743-2323

1. Membership:

- a. 94 communicants + 13 baptized only = 107 baptized members [1-1-2014 (for LCMS report)]
- b. 58 of the 107 baptized members as of Dec 31, 2013 attended worship at least once during 2013 = 54%
- c. Sunday worship attendance average YTD [Jan - Dec 2013] = 48
- d. Monthly visits with our homebound members + those under pastoral care continue

2. Membership changes in 2013: (all communicant members)

Transfers In: Alex and Rose Webster (+2)

Transfers Out: Tom & Lisa Tangen and Thomas (-3)

Released: Becky Neuert and Shelby and Levi (-3)

Deaths (-5): Blanche Suelzle [3/27];
Robert Pureerst [5/2];
Glen Kulas [6/21];
PJ Flanigan [11/25];
Ruth Staab [11/28]

3. Pastor Flath is on the Operation Barnabas Advisor Board for The Lutheran Church-Missouri Synod

There are meetings every so often throughout the year.

Our next meeting is in San Antonio, TX -- Feb 24 - 26 (M-W).

4. Lenten service schedule:

- a. Midweek Lenten Services will be @ 7:00 pm on Mar. 5, 12, 19, 26, & Apr 2, 9 (any other interest?)
- b. Holy Week Services will be @ 7:00 pm: Apr 17 Maundy Thursday w/ HC & Apr 18 Good Friday
- c. Easter Sunday is April 20th this year = w/ HC

5. Elders discussed with me the < 20 and < 30 hours and impact for future (for now keep as is)

6. Questions

Pastor Flath [updated 1-24-2014]



Council Report – Mel Suelzle

December 31st marked the end of our first half of fiscal year 2014. Our financial results for this 6 month period is shown below. We continue to be blessed with good performance in both income and expenses. For the first half, our income was 101% of our plan and expenses were 99.5%. This near perfect performance to plan was only possible through the continued generosity of our members and friends to maintain our contributions while controlling expenses. We expect similar performance for the remaining 6 months of our fiscal year and thank everyone for their support and help in making our first half a financial success.

Financial Report for First Half of FY2014 July – December

Income	Budget	Actual		Remaining \$\$
Worship Service Offerings	49,026	48,146	98%	880
Other	738	2,088	283%	-1,350
Building Fund Donations	8,644	8,489	98%	155
Facility Use Income	3,784	3,895	103%	-111
Total Income	62,192	62,618	101%	-426
Expense				
Elders	20,606	20,662	100%	-56
Trustees	27,195	27,159	100%	37
Preschool	0	0	--	0
Council	2,517	2,590	103%	-73
Administration	5,373	5,258	98%	115
Worship & Music	3,693	3,628	98%	64
Education	0	161	--	-161
Fellowship	550	67	12%	483
Social Ministry	0	250	--	-250
Stewardship	200	191	96%	9
Evangelism	533	425	80%	108
Total Expense	60,667	60,391	99.5%	276
Income Less Expense	1,525	2,227	146%	-702

Voters Meeting - Our first meeting of the new calendar year was held on January 19th, Below is a recap of the key items discussed and decisions made during this meeting.

- We reviewed the many accomplishments during 2013 from a financial and project perspective.
- We approved an amendment to the LCMS Constitution
- We reviewed plans and projects for 2014
- Council positions were reviewed, nominations were opened and the filled positions were approved for 2014.
- Continuation discussion from our last meeting regarding the possible sale of the NW corner of our property. A few issues were raised to be resolved before moving further on this matter.

FEBRUARY

Important News & Dates

GOOD & FAITHFUL SERVANTS

~ February 2014 ~

USHERS:

- Feb. 2nd** Lenn Gorsuch
Doug Spaulding
Feb. 9th Charlie Stewart
Willie Whitfield
Communion – Karl Simon
Feb. 16th Karl Simon
Steve Kennedy
Feb. 23rd Gary Eneberg
Doug Spaulding
Communion – Karl Simon

LECTORS:

- Feb. 2** – Emma Suryan
Feb. 9 – Charlie Stewart
Feb. 16 – Grace Hunttoft
Feb. 23 – Mel Suelzle

GREETERS:

- Feb. 2** – Linda Gorsuch
Feb. 9 – Mary Stewart
Feb. 16 – Ruth Walker
Feb. 23 – Carol Hauge

POST-A-NOTE

~ February 2014 ~

- Feb. 1st - 8:30 a.m. Men's Breakfast [Green Room]
Feb. 4th – 6:30 p.m. Elder's Meeting
Feb. 8th – 9:30 a.m. Crafters Meeting [Green Room]
Feb. 11th – 7:00 p.m. Council Meeting [Youth Room]
Feb. 15th – 8:30 a.m. Men's Breakfast [Green Room]
Feb. 16th – Presidents Day [church office closed]
Feb. 18th – 9:00 a.m. Circuit Pastor's Meeting
1:00 p.m. Ladies Guild Meeting
NEWSLETTER ITEMS DUE TODAY!
Feb. 24-26th – Pastor at Operation Barnabas
Feb. 26th – Bible class cancelled today.

**THE ELDER ON CALL FOR
FEBRUARY IS:**

Karl Simon (425)670-3354

**FLOWER CHART
~ February 2014 ~**

**Please consider placing
flowers on the altar to the
glory of our Lord and the
many blessings we receive
each day.**

**Sign-up Sheet is on the
“Service”
Bulletin Board in the
Narthex.**



COFFEE HOSTS



Any member or groups are invited to host coffee hour after the worship service on Sundays. A sign up sheet is in the narthex on the small bulletin board at the media center. Hosts volunteer to bring and serve: cookies, breads, and/or fruit; and clean up the fellowship hall and kitchen (coffee pot, hot water pot, dishes, any utensils that need washing and returned to their storage spaces).

COFFEE IS MADE BEFORE BIBLE CLASS

FELLOWSHIP NEWS

Please Remember in Your Prayers:

Our homebound members:

Margaret Burrier; Barbara Howe;
Suzanne Kiner; Carolyn McLaughlin

Health Concerns:

Marie (Doug Spaulding's wife);
Liese Whitfield; Sophia (Craig & Brenda
Skrede's niece); Carolyn McLaughlin;
Charles Watters; Jack (Millie Molenda's
husband); Gail (Gary Eneberg's mother);
Dona Hoffman; and others who are ill.

Other Requests:

People without faith in Jesus Christ,
for those who are discouraged;
those who need a living faith for Jesus;
and for outreach into our community.

LUTHERAN HOUR MINISTRIES

Listen to:

THE LUTHERAN HOUR

Sundays

6:30 a.m. - 880 KIXI AM
7:00 a.m. - 1380 KRKO AM
9:30 a.m. - 1180 KLAY AM



WOMAN TO WOMAN

With Phyllis Wallace
7:15 a.m. - KONP 1450 AM
Port Angeles

CAMPBELL'S SOUP LABELS

Please save the UPC bar codes on
Campbell products for Good Shepherd
Homes. Carefully cut the labels so
barcode and points are intact, for they
will not accept damaged labels.
Place all UPCs in the box on the counter
in the Narthex.

Visit Campbell's web site for an updated
list of eligible products
www.labelsforeducation.com

OUR CHURCH NEWSLETTER IS ONLINE

The St. Timothy monthly newsletter and
calendar is available online! To catch up on
current news, events, and see what we have
scheduled in this month's calendar,
please visit:

www.sainttimothy.lutheran.net

Let us know if you prefer to read your St.
Timothy news online, and we will print one
less copy - email us at:
stlc_office@frontier.com

MARCH NEWSLETTER

Newsletter Articles and Calendar
information need to be submitted by

Tuesday, February 18th, 2014!

Please have all info printed or handwritten
and place in the *NEWSLETTER*
mailbox, OR sent via e-mail to
Nicole Skrede at skredenm@gmail.com.

Please let us know if we have missed your
birthday or anniversary on the calendar.

Thanks! ☺

FELLOWSHIP NEWS

BIBLE STUDIES AT ST. TIMOTHY

Sunday morning at 9:00 a.m. in the Fellowship Hall. At the present time we are studying the book of Genesis.

Wednesday morning at 9:30 - 11:00 a.m. in the Fellowship Hall. The group is looking at the Bible Feasts and how they were fulfilled in Jesus Christ. Both men and women are invited to attend.

Please consider joining your brothers and sisters in the faith in studying God's Word together.



Issues, Etc.

Christ-Centered Cross-Focused Talk Radio

TALK RADIO FOR THE THINKING CHRISTIAN... You can listen to simple teachings for laypeople on topics like: Roe v. Wade, The End Times, The Person of Christ, Old Testament Judge Samuel, The Sermon on the Mount and more. Issues, Etc. is a radio talk show produced by Lutheran Public Radio in Collinsville, IL and hosted by LCMS Pastor Todd Wilken. You can listen to what you want when you want at www.issuesetc.org.

St. Timothy Prayer Team



Patsy Simon (425) 670-3354
Pat Jones (425) 379-7077
Shirley Howell (425) 778-8391
Brenda Gonzalez (425) 245-3452
Sharon Starck H: (425) 609-3114
C: (206) 418-8968
Carol Hauge (425) 743-9430
Laura Washabaugh (425) 741-0517
Kim Reinig (206) 542-8050
Pastor Flath C: (425) 210-1795



Telephone Patsy Simon to begin the prayer.

Contact any member of the Prayer Team to request prayer support - confidentially or to one member of the team. No need is too small or answered prayer too little, to neglect to mention it to our Heavenly Father.

"Be joyful in hope, patient in affliction, faithful in prayer." **Romans 12:12**

2 CHRONICLES 7:14 GROUP



The 2 Chronicles 7:14 Prayer Group meets each Sunday at 8:30 am.

We have a dedicated group of 4 or 5 people and wish to include as many of you as possible.

We meet to pray for the up-coming service, the Pastor and his message, others who will be serving, the Sunday School and teachers, LC-MS, all Christian churches, membership needs, or country and its government, the military, and whatever God lays on our hearts.

If you're wondering about our name, go to your Bible and read the passage of 2 Chronicles 7:14, *then* come a little earlier and join us in lifting our prayers to the Lord. Or let us know your prayer requests so that we may present them to the Lord for you. If you're not comfortable praying in a group, join us while we pray and add your thought to strengthen our prayers before God. We'll see you in the "Blue Room" - in prayer.

~ St. Timothy Crafters

~

The St. Timothy Crafters meet every second Saturday of the month in the Green Room for crafting.

It is a time from 9:30 a.m. to 1:00p.m. when we enjoy encouraging each other along with handwork projects.

Feel free to join us, and invite a friend!



Our Next Meeting is:

February 8th

Contact person is:

Patsy Simon (425) 670-3354



LADIES GUILD NEWS



**SERVE THE LORD
WITH GLADNESS**

Psalm 100:2

The Ladies Guild purpose is to provide the women of St. Timothy Lutheran Church the opportunity to increase their knowledge of our Savior, and to benefit from fellowship and service to the Lord.

Ladies' Guild Meetings

Meetings are held every third Tuesday of the month. Our next one will be on February 18th at 1:00 p.m.

LWML MISSION MITES are collected on the fourth Sunday of every month. Please bring yours on *February 23rd*, and it will be collected during the church service when you come up for communion.



FEBRUARY MISSION POST

The February Bake Sale will be on February 9th after the church service in the Fellowship Hall. All are welcome to bring items to sell, buy items and enjoy! All proceeds go to the Bethesda Lutheran Communities.

Also, there will be a soup supper on April 9th, which will be hosted by the Ladies Guild. All are welcome!

- Pat Jones

Dear Friends,
Thank you so very much for your generous and thoughtful gift to COCOON House! It was so kind of you all. Because of support from people like you, we are able to provide housing, prevention + outreach services to the teens + families most in need. Thank you for making this possible! Best wishes in 2014!

Chelsea Mann



2929 Pine Street
Everett, WA 98201

Received
JAN 7, 2014

St. Timothy Lutheran Church

Thank you
for helping to
break the cycle for
a homeless teen.



**You are Cordially Invited to Attend a
Special LMS Family Reunion:
The Story of LMS Through Faithful
Servants**

- ***Come** and Celebrate 75 Years in God's Service.
- ***Come** to greet current and former LMS Chaplains, Deacons, Deaconesses & Volunteers.
- ***Hear** their stories and be inspired.

Sunday, February 9, 2012

Pilgrim Lutheran Church 1420 SE 11th Street Bellevue, WA 98004

1:00-3:30 ~ The Board of Directors will be providing a complete dinner~

**Casting our net for Members of the
LMS Board of Directors**

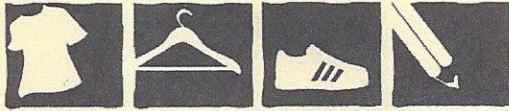
**Are you passionate about the ministry of LMS?
Do you have a vision to help this ministry thrive?
Openings for 2014 -2017 are available for you to
prayerfully consider.**



Please contact donsundene@hotmail.com or 425-885-5889

The Rev. Dr. Wallace Schulz will be at Messiah Lutheran Church, Marysville, WA on Sat. Feb. 8 at 10am-Noon. His topic will be "Teaching the Bible Faith to Children and Adults - with Pictures - So They Stay in the Lutheran Church." Lunch will be served following his presentation, so please RSVP via email at secretary@messiah-lcms.org or by calling 360-659-4112. There is no charge for the presentation. Rev. Schulz is editor and writer for Good News Magazine and evangelist and mission speaker for Lutheran Heritage Foundation. Previously he served as a speaker for the Lutheran Hour radio program and as a Vice President of the LCMS.

Received
Jan. 14, 2014



CLOTHES FOR KIDS

..... transforming lives.....

Board of Directors:

Carrie Bendiksen

Mark Choivin

Tracy Cobbin

Mike Gibson

Shelby Johnson

Robert Schwerfley

Lynda Tripp

Development Director:

Joy Ingram

jingram@clothesforkids.org

Program Manager:

Nancy Laird-Burris

nlaird@clothesforkids.org

Mission Statement:

The mission of Clothes For Kids is to help qualified community members build confidence and self sufficiency by providing quality wardrobes and resources.

www.clothesforkids.org

Phone: (425) 741-6500

Fax: (425) 741-6511

16725 52nd Ave West
Suite B
Lynnwood, WA
98037-5710

January 8, 2014

St. Timothy Lutheran Church
5124 164th St. SW
Edmonds, WA 98026-4833

Dear Congregation,

Thank you for your donation of \$250.00 to CLOTHES FOR KIDS! Gifts such as this are vital in our efforts to assist local low-income children and families to build confidence and self-sufficiency.

Last school year, CLOTHES FOR KIDS provided 4,206 wardrobes to low-income students in Snohomish County, representing nearly a 10% increase over the previous year. This school year, we have already served over 2,000 children. The goal of our organization is to make a difference in the lives of the children we serve *one wardrobe at a time*. We simply could not do this without the commitment of caring and compassionate community partners like Edmonds Unitarian Universalist Church!

If you would like to learn more about CLOTHES FOR KIDS and the difference donations like yours are making, please visit our website at clothesforkids.org or follow us on Facebook at [facebook.com/clothesforkids](https://www.facebook.com/clothesforkids). Or consider attending one of our Open House events the first Wednesday of each month! Please see the calendar on our website or call 425-741-6500 for more Open House information.

Thank you for your support of our program. With your help, we will continue to *transform lives*.

Sincerely,

Nancy Laird-Burris
Program Manager

CLOTHES FOR KIDS is a 501(c)(3) non-profit corporation, Tax # 91-1345075

Received
JAN. 7, 2014



January 2, 2014

St. Timothy Lutheran Church
5124 164th Street Southwest
Edmonds, WA 98026

The Family Center
*...where the programs are
flexible and continually
responsive to emerging
family and community
priorities...*

6330 195 St SW
Lynnwood WA 98036

Tel: 425 670-8984
Fax: 425 776-0790

Contacts:

Tim Gahm
tgahm@lcsnw.org

Carmen Rasmussen
crasmussen@lcsnw.org

Tracy Nugent
tnugent@lcsnw.org

Amy Dennis
adennis@lcsnw.org



United Way
of Snohomish County
A proud recipient of United Way
community impact funding.

A program of:



Dear Congregation Members of St. Timothy Lutheran Church,

Thank you so much for your recent contribution to Lutheran Community Services Northwest, Family Center of South Snohomish County. In addition to the acknowledgement of your gift by Lutheran Community Services, as the Program Manager of the Family Center I also want to personally thank you.

Your contribution has a profound impact in our ability to develop services and programs benefiting the families and children of our community. Several recent examples of our efforts include our annual Back to School Resource Fair. Through contributions such as yours we were able to supply 700 backpacks filled with school supplies to needy children in the Edmonds School District. This fall we supplied 200 winter coats to low-income children.

Speaking for the staff and volunteers of the Family Support Center, we wish to offer you our deepest appreciation for your support. Please know that your gift allows us to continue our efforts for those of our community who are most in need.

Sincerely,

Tim Gahm
Program Manager



Saint Timothy Lutheran Church

5124 164th ST SW EDMONDS, WA 98026

Office: (425) 743-2323

<http://www.sainttimothy.lutheran.net>

February 2014 A.D.

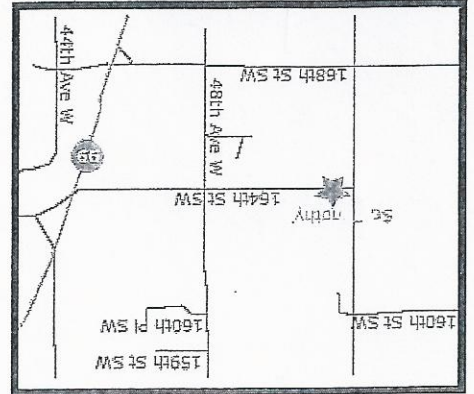
Sunday	Monday	Tuesday	Wednesday	Thursday	Friday	Saturday
February Birthdays 6 – Margaret Burrier 8 – Bonnie Kulas 11 – Irene Lenz 21 – Lenn Gorsuch	February Anniversaries 6 – Mike & Cindy McEntire	Key: (G) Green Room (F) Fellowship Hall (Y) Youth Room				
8:30a Prayer Group 9:00a SS & Bible Study 10:00a Worship Service 1:30p NWSBC Worship	7:00p Boy Scouts (F) 7:00p AA Meeting (G)	6:00p NWSBC Prayer (G) 6:30p Elder's Meeting (Y)	9:30a Bible Class (F) 6:30p Cub Scouts (F) 7:00p AA Meeting (G)	7:00p AA Meeting (G)	7:00p NWSBC Meeting 7:30p AA Meeting (G) 9:30a Crafters (G)	8:30a Men's Breakfast (G) 7:30p AA Meeting (G)
8:30a Prayer Group 9:00a SS & Bible Study 10:00a Communion Service 11:15a Bake Sale (F) 1:30p NWSBC Worship	7:00p Boy Scouts (F) 7:00p AA Meeting (G)	6:00p NWSBC Prayer (G) 7:00p Council Mtg. (Y)	9:30a Bible Class (F) 6:30p Cub Scouts (F) 7:00p AA Meeting (G)	7:00p AA Meeting (G)	7:00p NWSBC Meeting 8:30a Men's Breakfast (G) 7:30p AA Meeting (G)	8:30a Men's Breakfast (G) 7:30p AA Meeting (G)
8:30a Prayer Group 9:00a SS & Bible Study 10:00a Worship Service 1:30p NWSBC Worship	President's Day [church office closed] 7:00p Boy Scouts (F) 7:00p AA Meeting (G)	9:00a Circuit Pastors 1:00p Ladies Guild 6:00p NWSBC Prayer (G) NEWSLETTER ITEMS DUE TODAY	9:30a Bible Class (F) 6:30p Cub Scouts (F) 7:00p AA Meeting (G)	7:00p AA Meeting (G)	7:00p NWSBC Meeting 7:30p AA Meeting (G)	7:30p AA Meeting (G)
8:30a Prayer Group 9:00a SS & Bible Study 10:00a Communion Service - MITES 1:30p NWSBC Worship	7:00p Boy Scouts (F) 7:00p AA Meeting (G)	6:00p NWSBC Prayer (G)	NO Bible Class 6:30p Cub Scouts (F) 7:00p AA Meeting (G)	7:00p AA Meeting (G)	7:00p NWSBC Meeting	7:00p NWSBC Meeting

Pastor @ Operation Barnabas
 Advisory Board Mtg. in Texas

PHONE NUMBERS
Church - 425-743-2323

E-MAIL
slc_office@frontier.com

WEB SITE
www.sainttimothy.lutheran.net



8:24 a.m. Prayer Service
9:00 a.m. Sunday school and adult Bible Study
10:00 a.m. Worship Service
11:15 a.m. Fellowship in Fellowship Hall

SUNDAY'S FOR FAMILIES



5124 164th St. SW
Edmonds, WA 98026-4833

*Serving Lynnwood, Edmonds and
Southwest Snohomish County*
St. Timothy Lutheran Church

ST. TIMOTHY LUTHERAN CHURCH
5124 164th St. SW
Edmonds, WA 98026-4833
(Address Correction Requested)

